

Power LogOn®

Online Identity Theft Protection



Power LogOn Manager on Firefox



Power LogOn Manager on Firefox

Access Smart[®], LLC
Power LogOn[®] Manager on Firefox[®]
v.4.1.x

Information in this document is subject to change without notice.

Some screen shots and figures may appear different on different computers due to how Windows[®] is configured on each computer.

Product and company names mentioned herein are the trademarks of their respective owners.

Direct questions and comments regarding the Power LogOn Manager and this document to support@access-smart.com.

Access Smart[®] is packaging Power LogOn Manager has been designed in cooperation with Open Domain Sphinx Solutions, Inc. as part of its Power LogOn[®] products.

CONTENTS

1. READING THE MANUAL	3
2. COPYRIGHT AND TRADEMARK INFORMATION	3
3. POWER LOGON FOR FIREFOX	3
3.1. Installing Power LogOn	3
3.2. Using Power LogOn in Firefox	6
3.3. Filling passwords from Power LogOn to Firefox	7
3.4. Firefox Set as the Default Browser	8

TABLE OF FIGURES

Figure 1: Utilities: Clean Card.....	4
Figure 2: Mozilla Firefox Software Installation Screen	4
Figure 3: Mozilla Firefox Add-ons Screen.....	5
Figure 4: Power LogOn Toolbar in Firefox.....	5
Figure 5: Mozilla Firefox Safe Mode Screen.....	5
Figure 6: Example of a logon panel	6
Figure 7: "Save Form" button from Power LogOn toolbar	6
Figure 8: Power LogOn's "Logon Information: Recorded Entry" window	7
Figure 9: Example of a logon panel	7
Figure 10: "Save Form" button from Power LogOn toolbar	8

1. READING THE MANUAL

This manual is a subset to older versions of the Power LogOn Manager User's Manual. For full information on Power LogOn see the User's Manual.

2. COPYRIGHT AND TRADEMARK INFORMATION

Information in this document, including URL and other Internet Web site references, is subject to change without notice. Unless otherwise noted, the example companies, organizations, products, domain names, e-mail addresses, logos, people, places, and events depicted herein are fictitious, and no association with any real company, organization, product, domain name, e-mail address, logo, person, place, or event is intended or should be inferred.

Complying with all applicable copyright laws is the responsibility of the user. Without limiting the rights under copyright, no part of this document may be reproduced, stored in or introduced into a retrieval system, or transmitted in any form or by any means (electronic, mechanical, photocopying, recording, or otherwise), or for any purpose, without the express written permission of Access Smart. Access Smart may have patents, patent applications, trademarks, copyrights, or other intellectual property rights covering subject matter in this document except as expressly provided in any written license agreement from Access Smart, the furnishing of this document does not give you any license to these patents, trademarks, copyrights, or other intellectual property.

© 2009 Access Smart, LLC. All rights reserved.

Access Smart, Access Smart Logo, Power LogOn, Powered by Smartcard Technology and design are registered trademarks licensed to Access Smart, LLC in the United States and/or other countries.

Other parties' trademarks or service marks are the products of their respective owners.

3. POWER LOGON FOR FIREFOX

- Click on "**Utilities**" in the menu bar, to select **Mozilla Firefox**[®].

3.1. Installing Power LogOn

Click on "**Utilities**" in the menu bar, and then click on the "**Mozilla Firefox**" selection, if your installation has this feature enabled. This will toggle the Mozilla Firefox capability to "on", so that you can use the Power LogOn Manager with Mozilla Firefox.

Once you have installed Power LogOn onto your computer, go to **Utilities** and select **Mozilla Firefox** to add a check mark.

Power LogOn Manager on Firefox

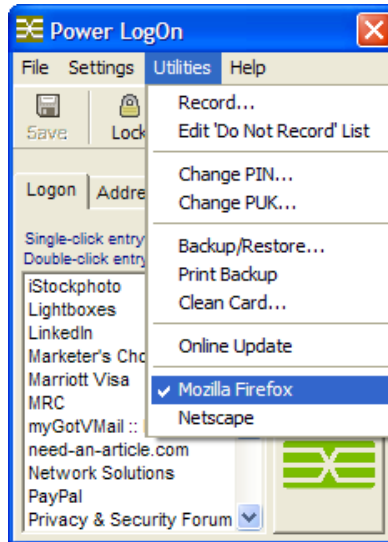


Figure 1: Utilities: Clean Card.

An installation information window will pop up. Follow the instructions which states:

If this is your first time you use Firefox with Power LogOn, perform the following steps:

- 1) Start Mozilla Firefox
- 2) Select the menu item File > Open File... (or press the Ctrl+O on the keyboard)
In the file section dialog, browse to the location of the file
"C:\Program Files\Power LogOn\Firefox\sphinxtoolbar.xpi"
Select it and click the "Open" button

The **Software Installation** window (Figure 2) will appear. Select the add-on you want to install, click "Install Now" button, and when finished (Figure 3) click the "Restart Now" button. Firefox will restart and the Power LogOn toolbar (Figure 4) will appear within the Firefox browser.

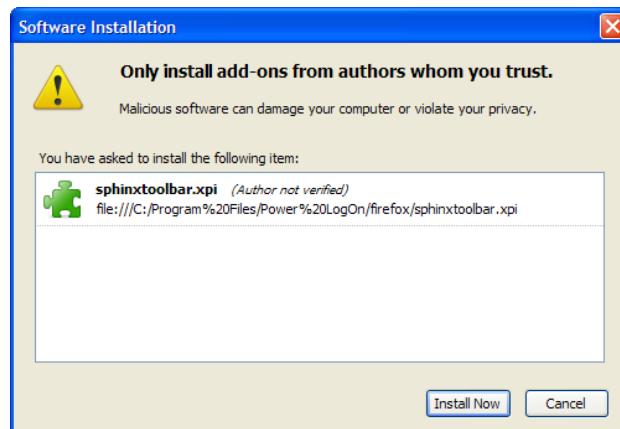


Figure 2: Mozilla Firefox Software Installation Screen

Power LogOn Manager on Firefox

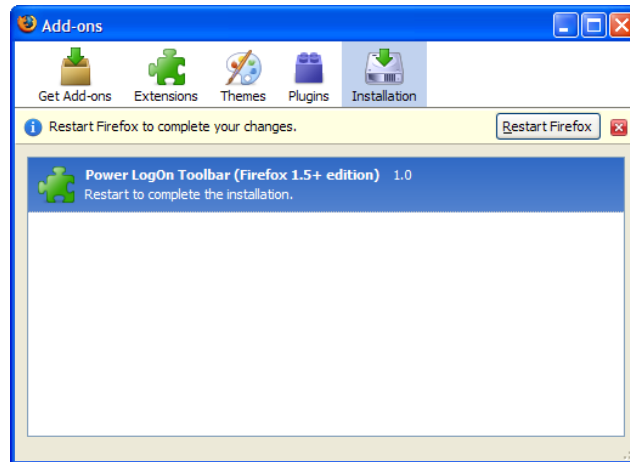


Figure 3: Mozilla Firefox Add-ons Screen

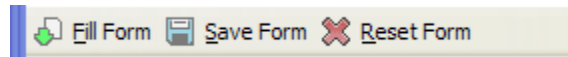


Figure 4: Power LogOn Toolbar in Firefox



Note: There have been cases where after installing the Power LogOn Toolbar plug-in and selecting the Power LogOn Toolbar to display, there is no toolbar. Here is how you fix the problem.

- Shut down Firefox
- Go to Start > All Programs > Mozilla Firefox > Mozilla Firefox (Safe Mode) (Figure 5)
- Check the “**Reset toolbars and controls**” box
- Click “Make Changes and Restart” button

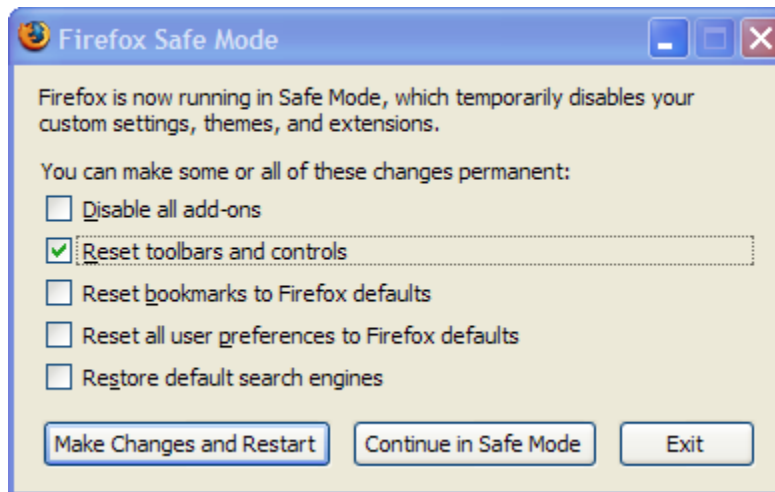


Figure 5: Mozilla Firefox Safe Mode Screen

3.2. Using Power LogOn in Firefox

Power LogOn must be installed and running and the card inserted into the reader as discussed in the *Power LogOn Getting Started* book for Firefox to work with Power LogOn.

Saving passwords from Firefox to Power LogOn

- With Firefox running and open, enter the web site you want to go to either by typing the address into the browser bar, using your Bookmarks, web search engine, etc.
- After your site's logon screen appears (Figure 6), type in your user name and password into the appropriate field but don't press the Enter key or click any submit buttons ("Go" in this example).

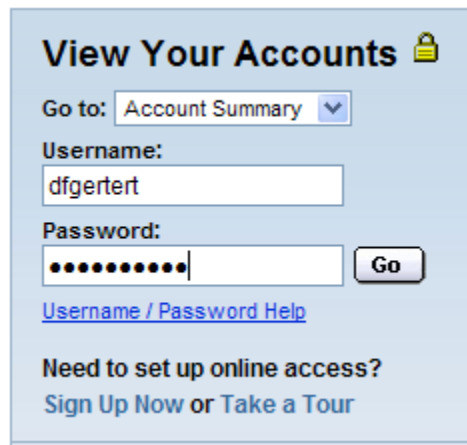


Figure 6: Example of a logon panel

- Click the "Save Form" button found on the Firefox's Power LogOn Toolbar (Figure 7)
-

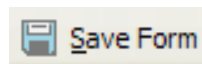


Figure 7: "Save Form" button from Power LogOn toolbar

- The Power LogOn's "Logon Information: Recorded Entry" window (Figure 8) will pop up. Review and make any changes as described in the Getting Started book.

Power LogOn Manager on Firefox

Type	Entry data	Enter with fill	Private
User name	dfgertert	<input checked="" type="checkbox"/>	<input type="checkbox"/>
Password	*****	<input checked="" type="checkbox"/>	<input checked="" type="checkbox"/>
Specify label		<input type="checkbox"/>	<input type="checkbox"/>
Specify label		<input type="checkbox"/>	<input type="checkbox"/>

Figure 8: Power LogOn's "Logon Information: Recorded Entry" window

- Click the "Ok" button
- The logon information has now been saved to the smartcard.

3.3. Filling passwords from Power LogOn to Firefox

- If not already done, start Power LogOn and authenticate yourself to the smartcard.
- With Firefox running and open, enter the web site you want to go to either by typing the address into the browser bar, using your Bookmarks, web search engine, etc.
- After your site's logon screen appears (Figure 9), click the "Fill Form" button (Figure 10) on the Firefox tool bar.

View Your Accounts

Go to: Account Summary

Username:

Password:

[Username / Password Help](#)

Need to set up online access?
[Sign Up Now](#) or [Take a Tour](#)

Figure 9: Example of a logon panel



Figure 10: "Save Form" button from Power LogOn toolbar

- Power LogOn will automatically fill in the user name and password information.
- Press the Enter key or click the submit button ("Go" in this example).

3.4. Firefox Set as the Default Browser

Power LogOn must be installed and running and the card inserted into the reader as discussed in the *Power LogOn Getting Started* book for Firefox to work with Power LogOn.

- Open the Power LogOn main logon window.
- Double click the entry to the site you want to go to.
- Firefox will automatically launch and go to the sites logon screen.
- With the cursor flashing in the first logon panel (typically the User Name panel), click the "Fill Form" button found on the tool bar.
- Press the Enter key or click the submit button.

Note: To protect user from online identity theft from phishing and pharming, Power Logon compares a site's URL to that stored on the card before any logon information is sent. Some sites have URLs that change frequently so it may seem that Power LogOn is not working, were in fact it is.

If you know that you are at the correct site, you can click and drag the user name and password into the correct fields by simply right clicking the site you want to go to listed in the Power LogOn main logon window. Using the double chevrons (<<), click, hold and drag the information.